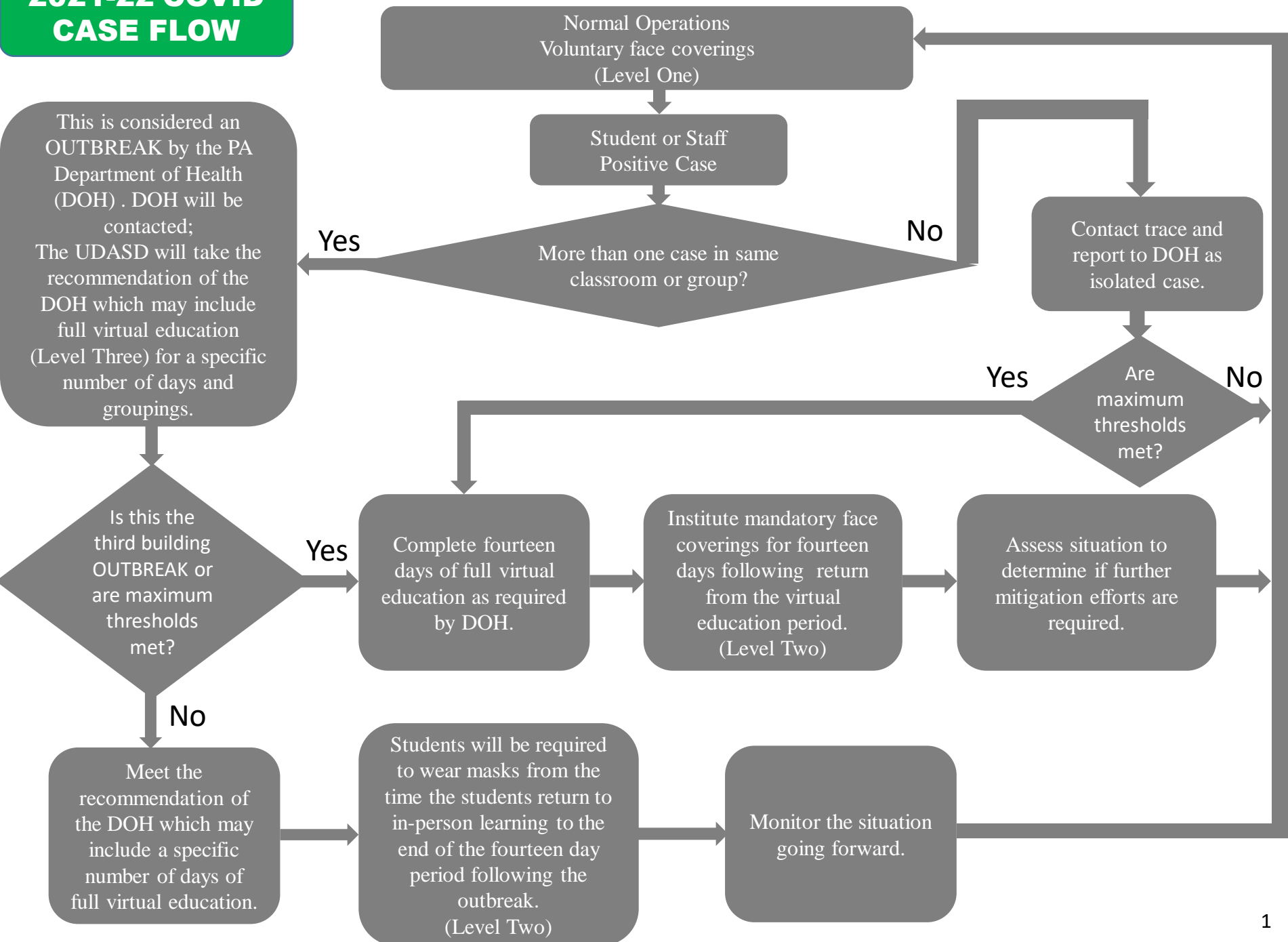


2021-22 COVID CASE FLOW



When will my child be required to wear face coverings during school or extracurricular activities?

Students and staff may voluntarily wear face coverings. However, there are certain situations where face coverings may be required based on government orders, to protect student and staff health and safety, or preserve in-person learning.

Situation	Response
By federal order of the Centers for Disease Control (CDC), face coverings must be worn when riding on UDASD transportation when traveling to and from school and traveling to and from extracurricular events.	The student will be asked to wear a mask when on the bus, but may remove the mask after departing the bus.
If a student is symptomatic for COVID-19 and the nursing staff or athletic trainer determine that the student needs to be isolated and sent home.	The student will be asked to wear a mask until the student leaves district property.
If a student is a confirmed positive case and is in school when the determination is made.	The student will be asked to wear a mask until the student leaves district property.
If a vaccinated student is determined to be a close contact of a positive student.	The vaccinated student will be required to wear a mask until they are able to be tested which can occur 2-5 days after contact. The mask can be removed after a negative test is returned.
If the threshold for an outbreak occurs and the determination is made to modify school operations (virtual learning) for less than fourteen days.	All students will be required to wear masks from the time the students return to in-person learning to the end of the fourteen day period following the outbreak.
If three outbreaks occur or the threshold for a fourteen day modification of school operations (virtual learning) is met.	All students will be required to wear masks for fourteen days following the return to in-person learning after the virtual learning period has ended.

What is the benefit of my child wearing a face covering?

Wearing a face covering can help prevent the spread of COVID-19. In addition, under certain circumstances, wearing a mask can help your child avoid a quarantine. If both the infected student and the close contact student were wearing masks, the close contact student does not have to quarantine under the latest guidance. Finally, the UDASD understands that parents want their children in school. The best way to do that at this point is through employing recognized mitigation measures. Out of the available mitigation measures, masking is the least disruptive to the educational process. While the UDASD recognizes that many families do not want their children to wear masks out of personal preference, the UDASD also recognizes that if case numbers continue to rise, in-person learning is in jeopardy. Using masks as a temporary mechanism to allow return to school following one or more outbreaks can get the students back to school and keep them in school for a longer period without disrupting the educational process.

What is the difference between virtual education and the Trojan Virtual Academy?

The Trojan Virtual Academy is a defined program within the Upper Dauphin Area School District. It has its own requirements for admission and is available to students who meet the criteria established by the UDASD. Virtual education as a result of pandemic restrictions is a separate process and does not mean that the student is enrolled in the Trojan Virtual Academy. For example, students in quarantine may access virtual education materials as if the child was home sick, and will be provided with opportunities for learning upon return. If the school is moved to full virtual education, the students will keep their existing schedules and complete their school work in a virtual environment on a temporary basis while the Trojan Virtual Academy is a program that is intended for longer term sustained virtual education.

How will I be able to find out the current status of my child's school?

Similar to last year, a dashboard will be created and displayed on the District's website. The dashboard will contain information about case levels, outbreaks, and face covering requirements at the time. The dashboard will be broken down by school building.

The thresholds that will be used for moving to a different level are:

- Elementary School = 19 cases
- Middle School = 16 cases
- High School = 18 cases
- District-Wide = If more than one building meets the criteria.