

COMMUNITY EXPANSION

Expansion opportunities in northern Dauphin County
and the surrounding communities

In cooperation with MI Windows and Doors

Please join us!



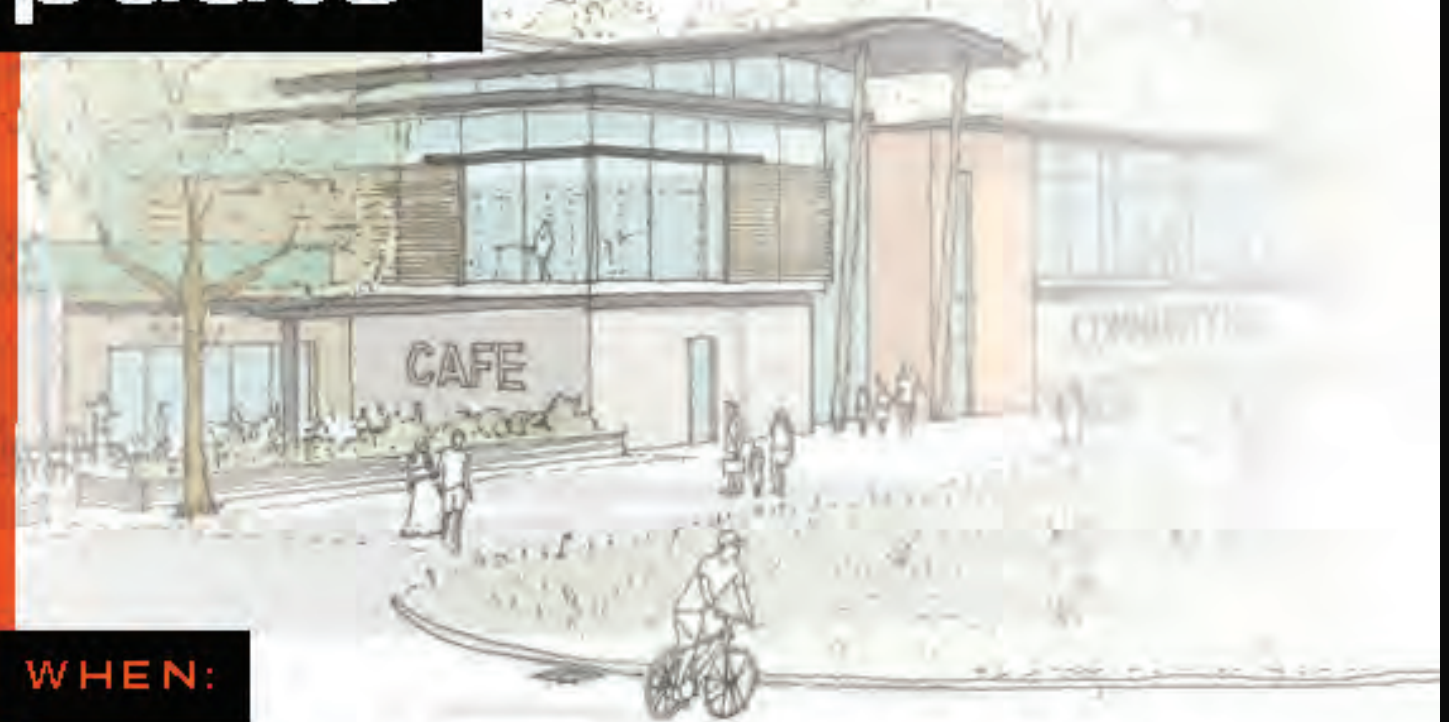
Upper Dauphin Area Land Development Update

PRESENTED BY MI® WINDOWS AND DOORS

Join business, community, and education leaders for an update on Upper Dauphin Area's transformative community expansion initiative in Northern Dauphin County.

Topics to include:

- Financial support
- Private-Public partnerships
- Timing & next steps



WHEN:

September 20
9-11 AM

WHERE:

MI Windows and Doors Ops Support Center / 650 W. Market Street, Gratz, PA 17030

* Tours of MI's manufacturing facility will be available after the meeting for those who are interested

WELCOME!

INTRODUCTIONS

SUMMARY OF 2023 DISCUSSION



SR1021

State Route 225

Upper Dauphin High School

Klinger Lumber

Elizabethville Area Library

Subway

Jo-Jo's Pizza

Broad St

North
Sampson

Next Steps

- Planning Committee to be formed and will meet regularly to create the plan for moving forward.
 - Entities represented at the meeting today will be invited to take part.
 - Plan will be in phases.
- School representatives were asked to go back and share ideas with their boards.
- Land development for building trades homes will be occurring in the near future.

Initial Priorities:

- Development of UDASD Property:
 - Early childhood education program explored.
 - Explore a workforce development technical center including programs.
 - Discussions with library about hosting the new Elizabethville facility.
 - Examine the feasibility of Northern Dauphin Christian School being hosted when their lease expires in two years.

WHAT WE
ACCOMPLISHED

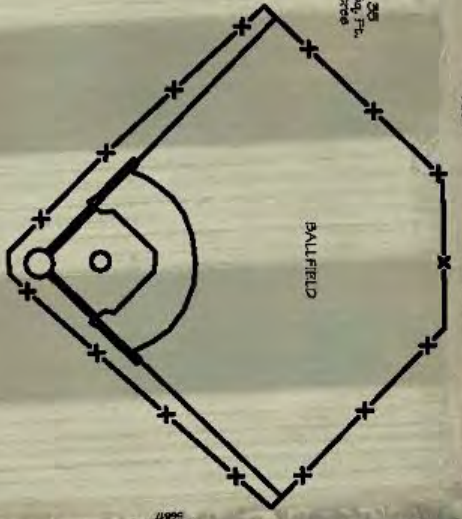
- Burch Associates Surveying
- Politician Meetings to secure funding

- **DCED Grant Application**

General Construction Contracts	Construction of Shawn's Way, including excavation, roadway, sidewalks, sanitary and water, street lights	\$1,593,240.00
General Construction Contracts	Construction of Tech Center Road, including excavation, roadway, sidewalks, sanitary and water, street lights	\$2,294,050.00



UPPER DAUPHIN
TECHNICAL
SCHOOL
&
EARLY
LEARNING
CENTER
89,420 Sq. Ft.



LOT No. 25
1,207 Sq. Ft.
29.81 Acres

LOT No. 24
174,227 Sq. Ft.
4.00 Acres

LOT No. 21
124,374 Sq. Ft.
2.80 Acres

LOT No. 22
125,220 Sq. Ft.
2.82 Acres

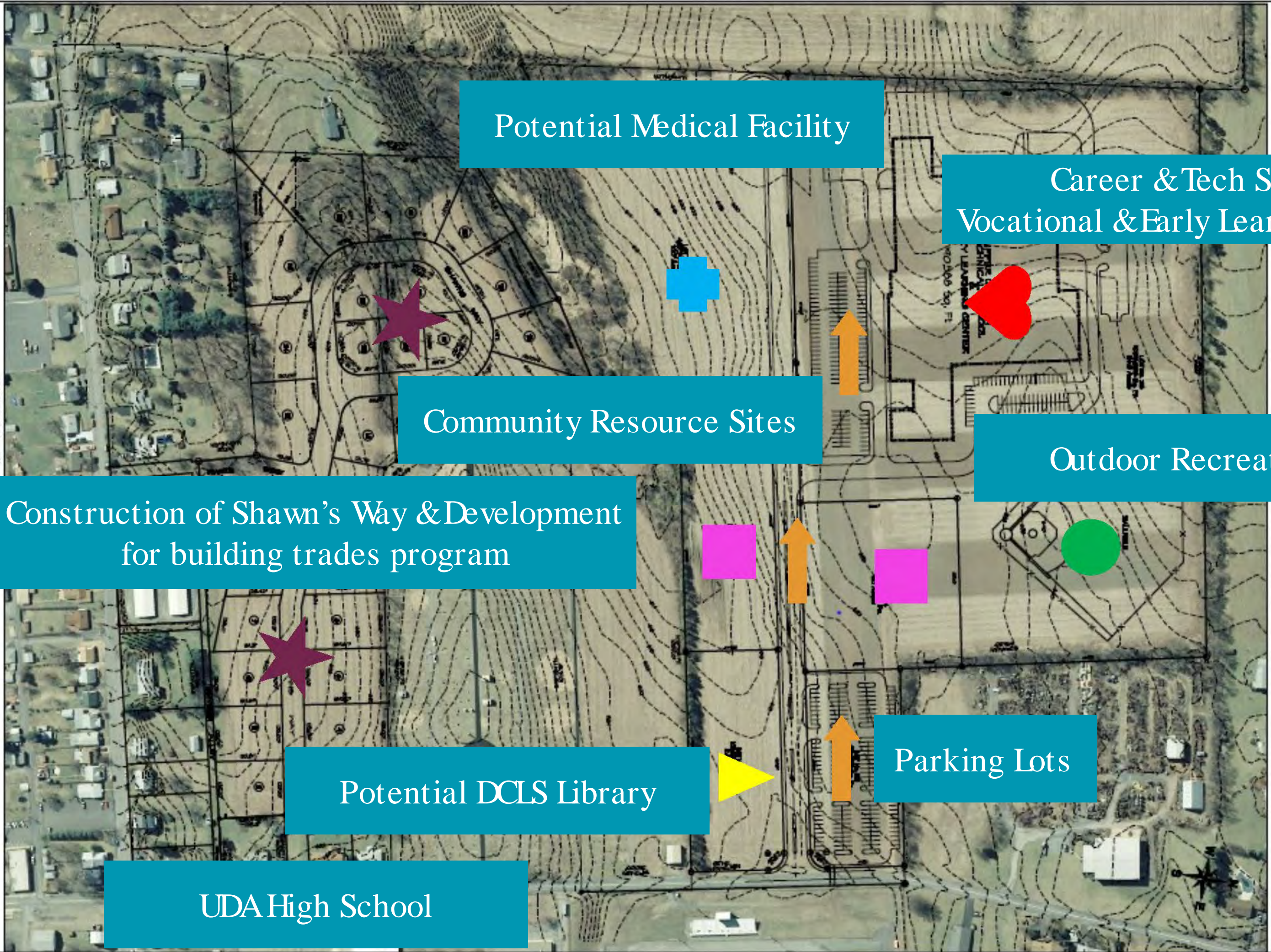
LOT No. 20
356,245 Sq. Ft.
8.07 Acres

LOT No. 19
222,027 Sq. Ft.
5.07 Acres



UPPER DAUPHIN SCHOOL DISTRICT

SKETCH PLAN FOR



Potential Medical Facility

Career & Tech School
Vocational & Early Learning Center

Community Resource Sites

Outdoor Recreation

Construction of Shawn's Way & Development
for building trades program

Parking Lots

Potential DCLS Library

UDA High School

CTE Enrollment by District

Upper Dauphin Area	Williams Valley	Tri-Valley	Halifax	Millersburg
DCTS: 9 UDA: 78	25	25	45	

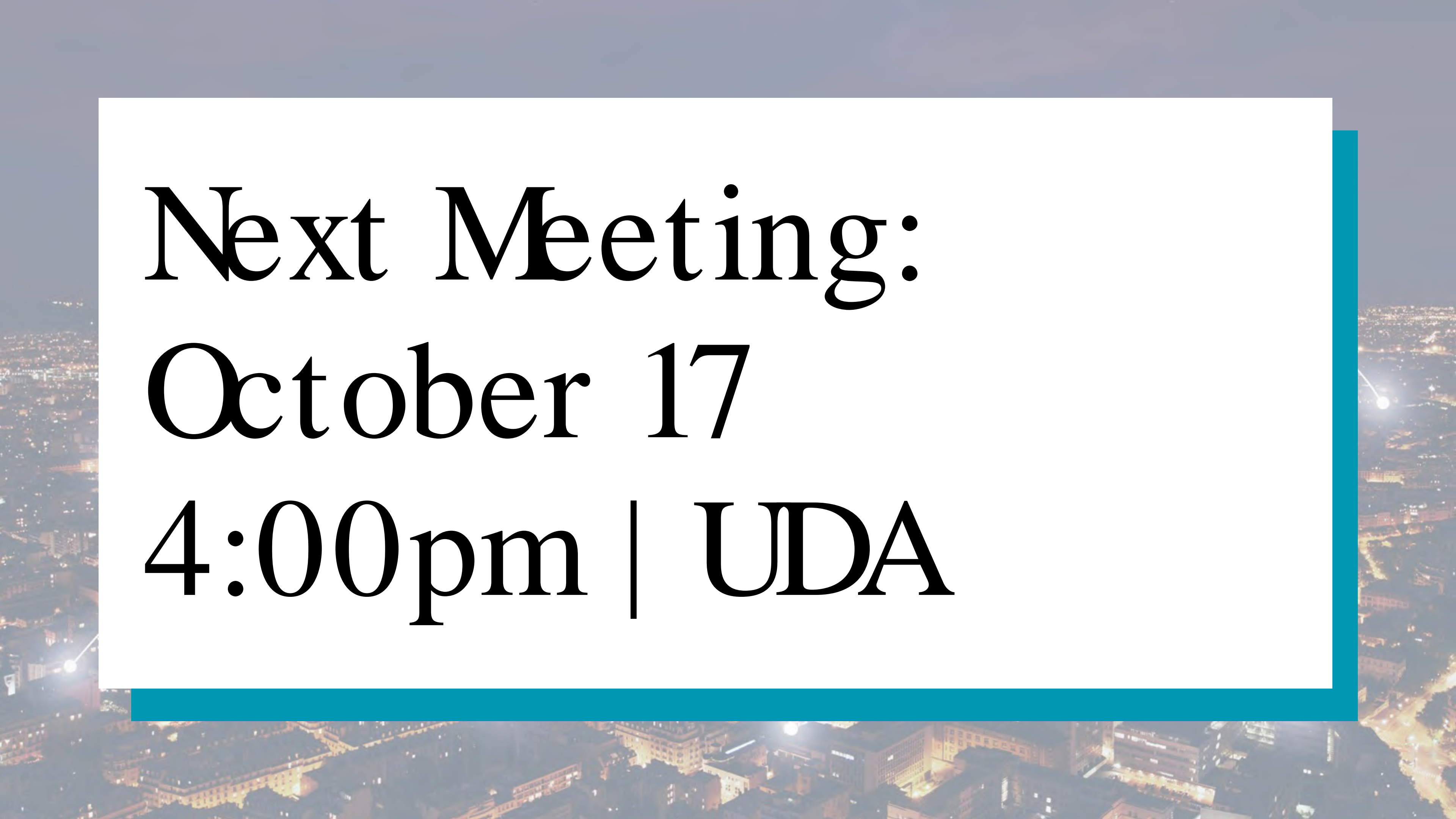
An aerial night view of a city with lights from buildings and streets. A large white rectangular box is centered on the image, containing the text 'WHAT'S NEXT?'. The box is bordered by a teal color on the right and bottom edges.

WHAT'S NEXT?

WE ARE ONE COMMUNITY

How can we work together to create better opportunities for our students?

DISCUSSION



Next Meeting:
October 17
4:00pm | UDA

THANK YOU!

Tour to follow for those interested.